

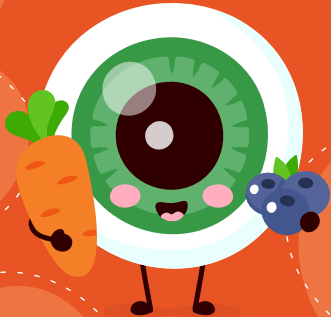


An Interactive Guide to Eye Anatomy

# Eye Spy

## the human eye

—The Cornea—

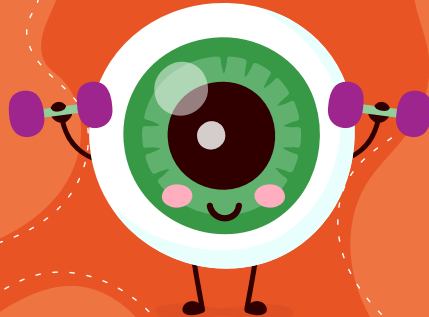


An Interactive Guide to Eye Anatomy

# Eye Spy

## the human eye

—The Pupil—

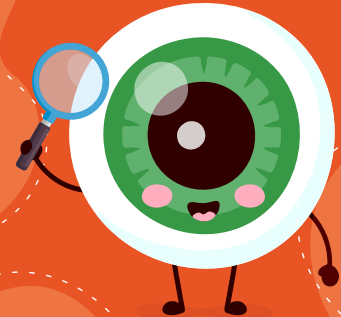


An Interactive Guide to Eye Anatomy

# Eye Spy

## the human eye

—The Iris—



An Interactive Guide to Eye Anatomy

# Eye Spy

## the human eye

—The Optic Nerve—

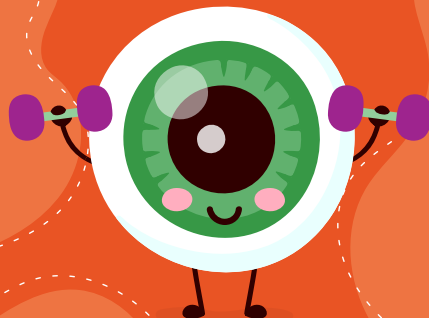


An Interactive Guide to Eye Anatomy

# Eye Spy

## the human eye

—The Retina—

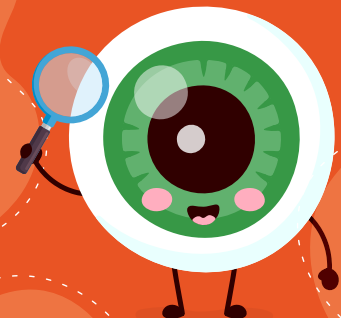


An Interactive Guide to Eye Anatomy

# Eye Spy

## the human eye

—The Sclera—

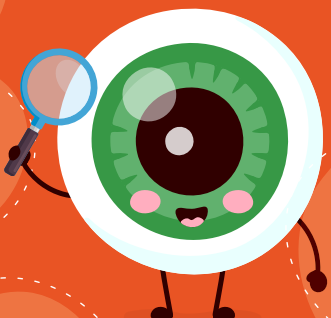


An Interactive Guide to Eye Anatomy

# Eye Spy

## the human eye

—The Lens—

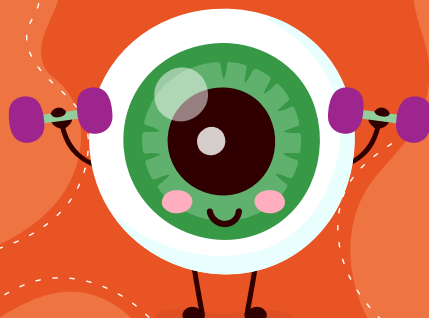


An Interactive Guide to Eye Anatomy

# Eye Spy

## the human eye

—The Macula—



An Interactive Guide to Eye Anatomy

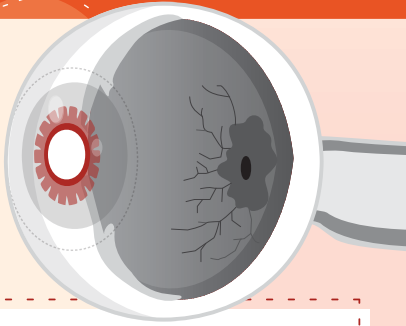
# Eye Spy

## the human eye

—The Vitreous—

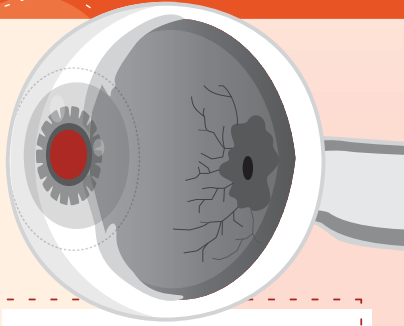


## Eye Spy the Iris



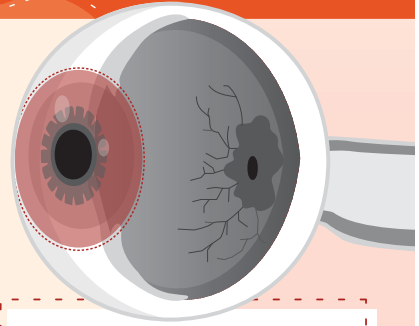
The iris is responsible for eye color. It can be brown, blue, green, or hazel (a blend of brown, yellow and green).

## Eye Spy the Pupil



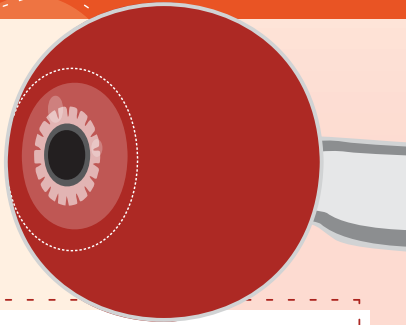
This pupil is the black opening in the middle of the iris. It widens and narrows to control how much light enters your eye.

## Eye Spy the Cornea



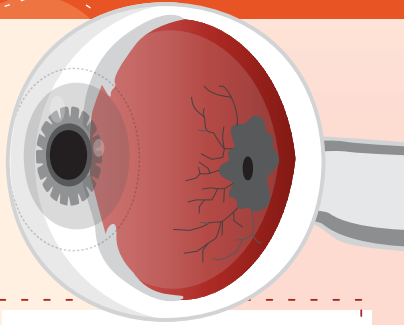
The cornea protects the inside of your eye like a windshield. The corneas also do part of the work bending light as it enters your eyes.

## Eye Spy the Sclera



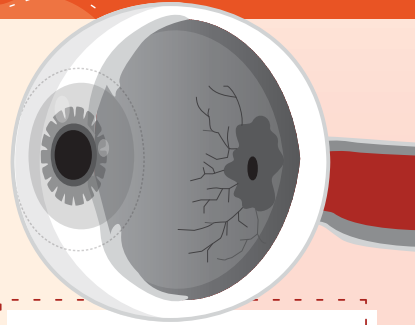
This is the white part of your eye that forms the general shape and structure of your eyeball.

## Eye Spy the Retina



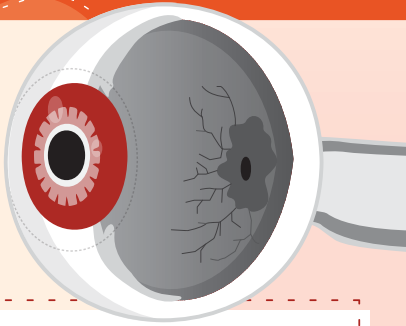
This thin layer of light-sensitive cells at the back of your eyes converts light into electrical signals. It contains rods (which help you see in low light) and cones (which help you see colors).

## Eye Spy the Optic Nerve



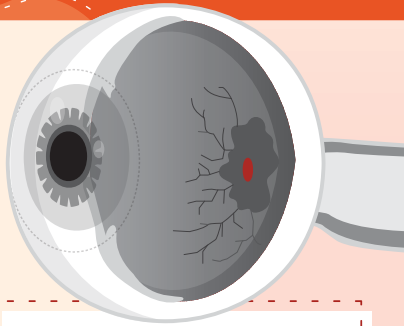
This connects your retinas to your brain. It's like the data cable that carries signals from your eyes, with connection points linking to multiple brain areas.

## Eye Spy the Lens



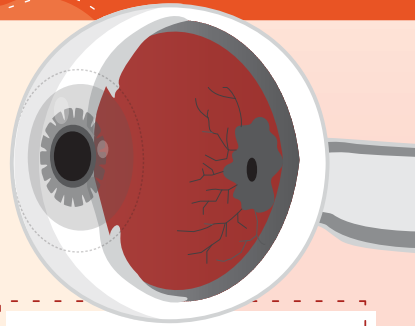
This focuses light that enters your eye and directs it to the back of your eye.

## Eye Spy the Macula



Helps you see color and details, and is responsible for the center of your visual field.

## Eye Spy the Vitreous



Clear, gel-like fluid that helps the eye hold its shape.